

# Measurement of Decoloration due to Electron Beam (EB) Irradiation on the Reactive Dyes

Majid Emami-Meibodi\*, Maryam Banaei and Mohammad-Reza Parsaeian

Central Iran Research Complex (CIRC), Nuclear Science and Technology Research Institute (NSTRI), Yazd, Iran

\*Corresponding author: Majid Emami-Meibodi, Central Iran Research Complex (CIRC), Nuclear Science and Technology Research Institute (NSTRI), Yazd, Iran, Tel: 983532633600; Fax: 983532634740; E-mail: [emamy\\_meibodi@yahoo.com](mailto:emamy_meibodi@yahoo.com)

Received date: 10 Jun 2016; Accepted date: 22 Aug 2016; Published date: 26 Aug 2016.

Citation: Emami-Meibodi M, Banaei M, Parsaeian M-R (2106) Measurement of Decoloration due to Electron Beam (EB) Irradiation on the Reactive Dyes. Int J Water Wastewater Treat 2(4): doi <http://dx.doi.org/10.16966/2381-5299.128>

Copyright: © 2016 Emami-Meibodi M, et al. This is an open-access article distributed under the terms of the Creative Commons Attribution License, which permits unrestricted use, distribution, and reproduction in any medium, provided the original author and source are credited.

## Abstract

EB irradiation is used for treatment of different wastewater including textile effluent and the decoloration effect may be evaluated by several methods. In this work, the effect of EB irradiation on reactive dyes is investigated due to Integrated Absorbance Units (IAU) and the method developed by members of the American Dye Manufacturers Institute (ADMI). The value of pH will affect ADMI measurement at low values but its effect on high values of ADMI and decoloration due to EB irradiation is negligible. According to the results, decoloration due to EB irradiation can be reported based on the ADMI with pH adjustment, ADMI without pH adjustment and IAU data.

**Keywords:** Reactive dye; EB irradiation; ADMI; IAU

**Abbreviations:** ADMI: American Dye Manufacturers Institute (a method for color measurement); EB: Electron beam; IAU: Integrated absorbance unit; kGy: kilo gray; Subscript 0: Un-irradiated.

## Introduction

One of a serious problem is environmental pollution [1], and the treatment of wastewater is a common problem throughout the world. Dyes are one of the most hazardous chemical compound classes found in industrial effluents (textile, leather, printing, cosmetic, food technology, hair coloring, and agriculture research) [2-5]. Hence, the removal of dye from waste effluents becomes environmentally important.

Traditional treatment methods are not efficient in removing these compounds because degradation of reactive dyes is difficult due to their complex structure, water solubility and synthetic nature [6]. Advanced oxidation processes (AOPs) are introduced as water treatment processes based on the generation of hydroxyl radicals to initiate oxidative destruction of organics. For example, some of the AOPs used for the treatment of wastewater are based on: ozone, UV irradiation, hydrogen peroxide, Fenton reagent ( $H_2O_2 + Fe^{2+}$ ), gamma irradiation, EB irradiation and combination of two or three of them [7-9]. EB is one of the AOPs that have been widely studied for degradation of environmental pollutants in water and wastewater [8,10]. The BOD<sub>5</sub>/COD ratio increased upon irradiation and it indicated the transformation of non-biodegradable dye solution into biodegradable solution [1]. Different processes and their economic feasibility for application of high power electron accelerator in the wastewater treatment have been reported by some authors [11,12]. The author's previous experiences with the effects of ozone and EB radiation on color removal of dyes mixture and experimental investigation of wastewater treatment using EB irradiation [13,14] were additional support in choosing the approach EB irradiation for degradation of reactive dyes in textile wastewater. Currently accepted methods to determine color are visual comparison method (color units), spectrophotometric methods, tristimulus filter method and ADMI tristimulus filter method [15].

Measurement of decoloration for industrial wastewater was studied in the literature [16-18]. Most of the published papers in this field studied

the decoloration curves by preparing appropriate solutions, treating them by stepwise irradiations and after each treatment taking the absorption spectra. The degree of decoloration is usually calculated from the decrease of absorbance at a selected wavelength, most conveniently at the maximum absorbance. However, modification the chemical structure due to irradiation will change either in the shape of the spectrum or in the wavelength of the maximum [2,19-21]. The integrated area of absorbance against wavelength is expressed in integrated absorbance units (IAU), which is directly proportional to sample color. The integration method has the advantage of simplicity over the ADMI tristimulus filter method and the two methods have been claimed to yield similar results [22]. Sample pretreatment is required to obtain the true color ADMI value. The sample pH is adjusted to 7.6 before filtration. The pH causes the variation in color value of natural water because the solubility of natural color-causing substances (e.g., humic acid, fulvic acid) varies with pH values.

Kao et al. [23] measured ADMI values at the original pH and pH 7.6 and derived a correlation between them for 300 textile wastewater samples as equation 1:

$$y = 0.9639x + 0.7753, R^2 = 0.9793 \quad (1)$$

where x is ADMI value at the original pH, y is ADMI value at pH 7.6 and R<sup>2</sup> is the square of the Pearson product moment correlation coefficient. They concluded that pH adjustment does not have a significant effect on ADMI values. Thus, for textile wastewater samples, pH control might not be necessary for ADMI value measurement [23].

In this work, "IAU reduction" is defined instead of decoloration as equation 2:

$$IAU \text{ reduction} = \frac{IAU_0 - IAU}{IAU_0} \times 100\% \quad (2)$$

where subscript 0 denotes un-irradiated samples. In addition, the ADMI reduction is defined as equation 3:

$$ADMI\ reduction = \frac{ADMI_0 - ADMI}{ADMI_0} \times 100\% \quad (3)$$

The experimental values of the IAU and ADMI are used for studying the effect of EB irradiation on the different reactive dyes.

### Experimental Section

Commercial textile dyes including four reactive dyes, Rem yellow GR, Sun Fix Navy Blue, Sun Fix red SPD, Wijlen black WXHT and their mixture, were obtained from a local company (Yazd-Baff Textile Factory, Iran) and used without further purification. According to two level factorial design methods [24], two concentration values were selected as lower and upper limits, 100 mg/L and 200 mg/L, respectively. Also two doses were selected as lower and upper limits, 0.91 kGy and 5.8 kGy, respectively. Compared to industrial textile wastewater, pure reactive dyes decompose more easily by EB however the highest selected concentration in this work yields decoloration results similar to those of primarily coagulated industrial textile wastewater. The irradiation doses are selected compared to suitable range of EB for industrial wastewater [14]. In addition to these tests, 50 mg/L of pure dyes were irradiated with 0.91, 2.6 and 5.8 kGy in order to access more accurate model. Although it is common to replicate three to five times the middle point of the experimental design (150 ppm and about 3.5 kGy), addition of 50 ppm sample to designed experiments result in wider concentration range and analysis of the data can be easily performed by function anovan in MATLAB software. The needed concentrations were prepared (for mixture of dyes the weight percent of different dyes are equal and the final concentration is adjusted to specified value) and 100 mL of the samples was poured in to similar containers and were irradiated according to the designed experiments. Samples were irradiated by 10 MeV EB of RHODOTRON TT200 accelerator in Central Iran Research Complex (CIRC). The experiments were done at room temperature. The absorbances of un-irradiated and irradiated samples were measured using a UV spectrometer of PerkinElmer incorporation. Hach DR5000 was used for ADMI measurements. In addition, for ADMI

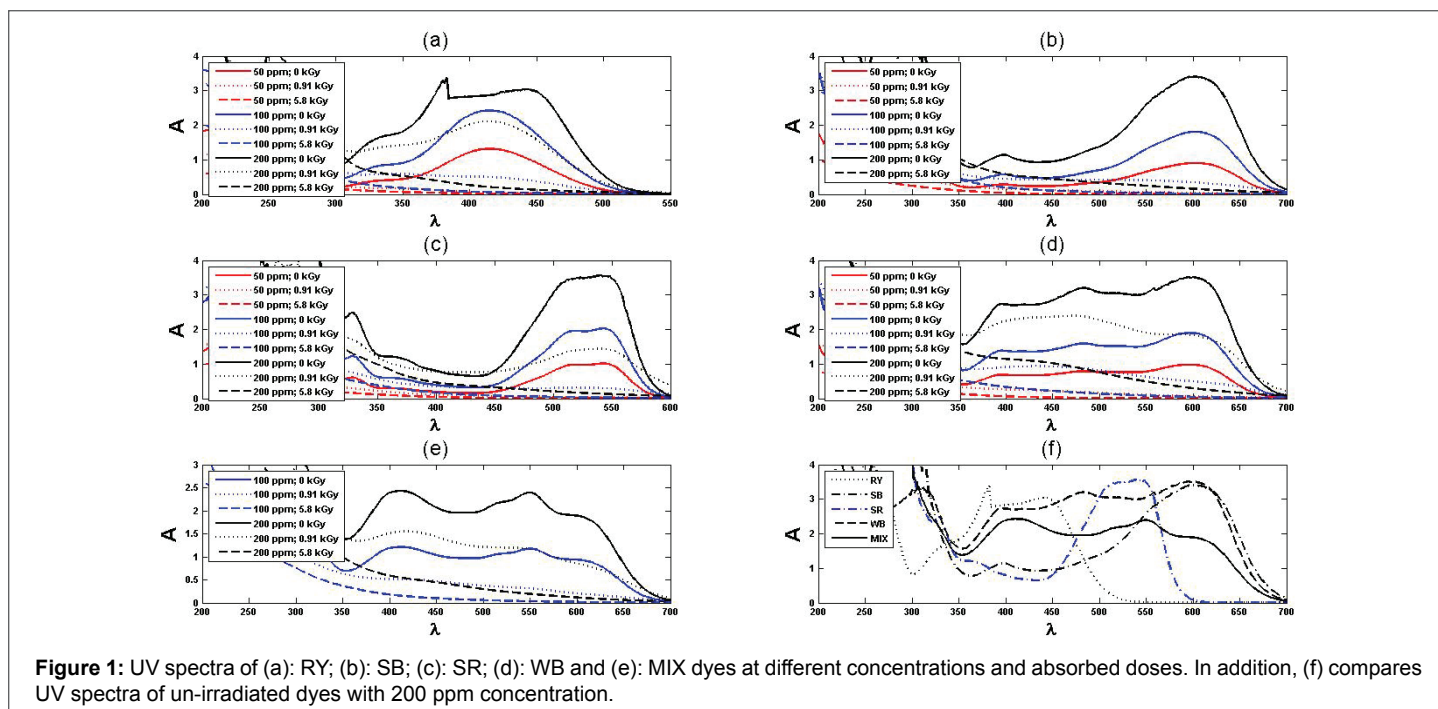
measurement with pH adjustment, the pH values of sample were adjusted to level 7.6 before measurement, using NaOH and H<sub>2</sub>SO<sub>4</sub> (0.1 molL<sup>-1</sup>, Merk, Germany).

### Results and Discussion

The UV-vis spectra of different dyes and their mixture at various absorbed doses are depicted in figure 1. As can be seen in figure 1f, the absorption spectra of dyes mixture has been completely differed compared to the spectra of the individual pure dyes.

According to the analysis of UV spectra the absorbency of the selected dyes are proportional to their concentration and the Beer-Lambert law ( $\frac{Absorbency}{Concentration} = C_{Beer-Lambert}$ ) is valid. Although the proportionality constants in Beer-Lambert law for pure dyes are almost similar ( $C_{Beer-Lambert} = 0.018 \rightarrow 0.02$ ), in the case of dyes mixture a different and unpredictable behavior is observed ( $C_{Beer-Lambert} = 0.012$ ). The effect of irradiation dose to pH has been investigated previously [2,19-21]. Here the RY, SB, SR, WB and MIX are used as abbreviations of Rem yellow GR, Sun Fix Navy Blue, Sun Fix red SPD, Wijlen black WXHT and their mixture, respectively. The pH, absorbency and ADMI reduction of the designed experiments are reported in table 1 (in some cases that Absorbency and/or ADMI data are missed, the related boxes are removed empty).

Initial pH values of RY, SB, SR, WB and MIX belongs respectively to the ranges 5.06-5.8, 5.98-6.04, 5.94-6.04, 5.5-5.7 and 5.25-5.6 relating to their concentrations. Based on the analysis of the variances of the pH results, dye type and irradiation dose are highly significant (p-value << 0.01) but dye concentration in the range 50 mg/L to 200 mg/L does not have any effect on pH value (p-value>0.1). The pH value decreases during irradiation and tend to a constant at high doses. It was suggested that at the beginning of their radiation, big dye molecules were decomposed into middle and small organic compounds such as formic acid, acetic acid and other compounds. If the dye solutions continued to be irradiated by EB, the interim compounds react with active species as hydroxyl radicals to be degraded further to inorganic products [25].



**Figure 1:** UV spectra of (a): RY; (b): SB; (c): SR; (d): WB and (e): MIX dyes at different concentrations and absorbed doses. In addition, (f) compares UV spectra of un-irradiated dyes with 200 ppm concentration.

According to the ANOVA analysis of the IAU reduction in the designed experiments as reported in table 1, dye type is insignificant ( $p\text{-value} > 0.1$ ) but absorbed dose has a highly significant effect on IAU reduction results ( $p\text{-value} \ll 0.01$ ) also among the different interactions, only concentration and absorbed dose highly significant effect ( $p\text{-value} \ll 0.01$ ). According to the ANOVA analysis of the ADMI reduction in the designed experiments as reported in table 1, dye type is significant ( $p\text{-value} = 0.029$ ) and absorbed dose has a highly significant effect on the results ( $p\text{-value} \ll 0.01$ ). The interaction between absorbed dose and concentration ( $p\text{-value} = 0.017$ ) is significant.

### The correlation between two data series

Generally, two series of data ( $x$  and  $y$ ) are identical if a correlation between them takes of the form equation (4)

$$\frac{y}{x} = a \quad (4)$$

with  $a = R^2 = 1$ . Nevertheless these conditions is rarely encountered because of the experimental random errors and if  $a \neq 1$  but  $R^2$  is precisely equal to one then two series will be different. Therefore a maximum  $R^2$  value against  $a (\approx 1)$  exists for accepting null hypothesis (null hypothesis cannot be rejected if there is no evidence to indicate that two series are different). Figure 2 shows the maximum  $R^2$  value for the relation  $\frac{y}{x} = a$  where satisfies null hypothesis between  $x$  and  $y$ . The number of data points (50, 100 and 150) does not change the typical graph. This figure depicts that for  $a \approx 0.9 - 0.92$  two data series  $y$  and  $x$  are similar with the widest range of  $R^2$ . According to the above discussion, the conclusion of Kao et al. [23] as mentioned in the introduction is not precise.

### The effect of pH on ADMI values

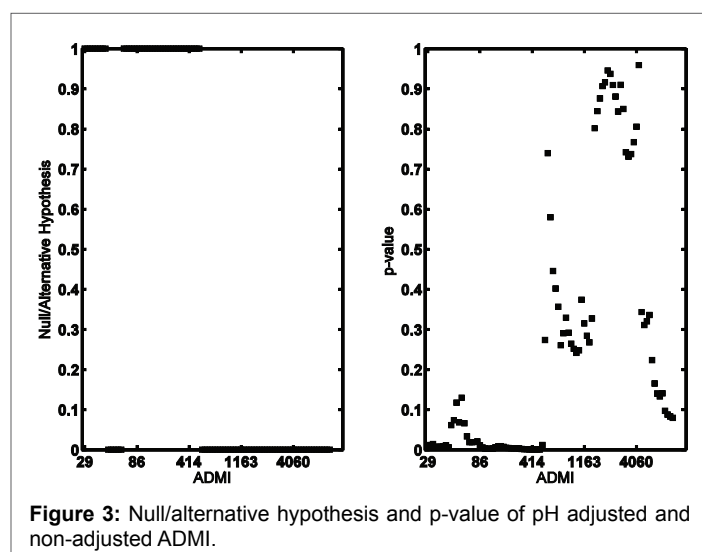
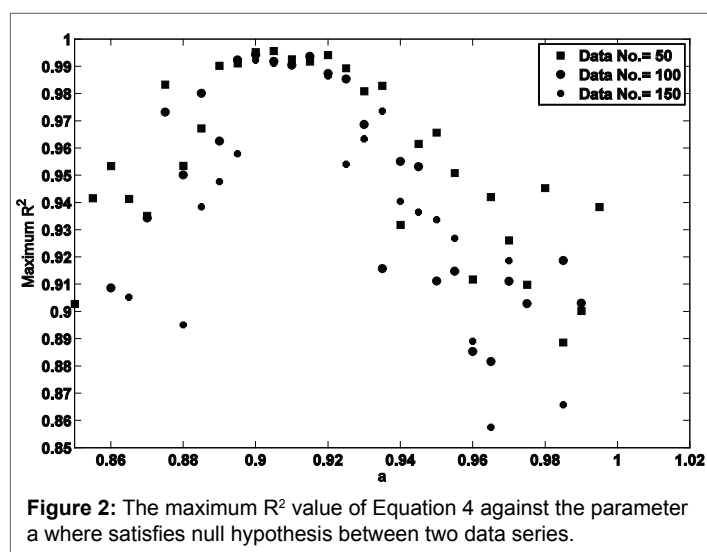
The ADMI values of more than 100 samples of previously mentioned dyes have been measured with and without pH adjustment and before and after irradiation. Figure 3 shows null/alternative hypothesis and  $p$ -value for paired comparison of two series data, with and without pH adjustment, versus ADMI values. In order to plot this figure at first the measured ADMI values were sorted and then the vertical axis was calculated using function  $[h,p] = \text{ttest}()$  in MATLAB. This figure implies that probably in the case of dye solutions with high ADMI values, it is reasonable to ignore the effect of pH adjustment. However it is not reasonable for low ADMI value.

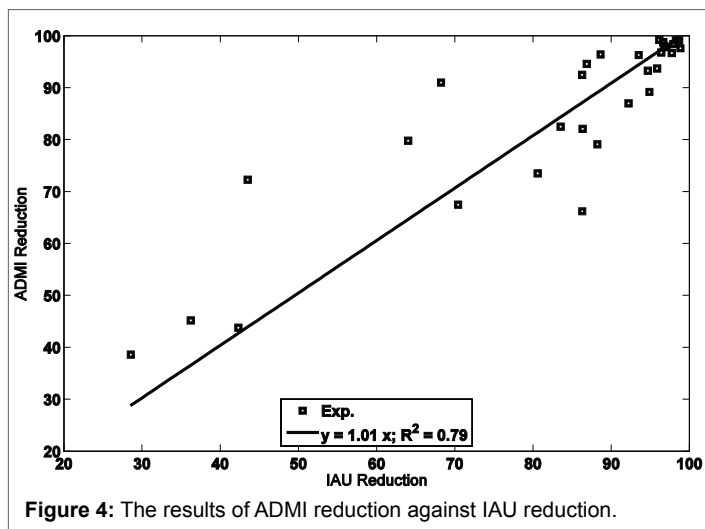
In the case of ADMI reduction calculations, paired comparison of the results for pH adjusted and non-adjusted ADMI values, results in a  $p\text{-value} = 0.99$  meaning minor effect of pH adjustment for these calculations. This observation is reasonable because during EB irradiation, the ADMI values usually reduce to less than one tenth of their initial values. The effect of pH adjustment will be ignored compared to such a large change in the ADMI values.

Figure 4 shows the results of ADMI reduction against IAU reduction. The  $p$ -value of these two sets of data is about 0.24 and therefore null hypothesis cannot be rejected. In other word, IAU reduction results can be used instead of ADMI reduction results for reporting EB irradiation effects on dyes. This conclusion is verified with the line fitted to the data with low  $R^2$  value ( $0.79 \ll 1$ ). Although this conclusion is only related to the decoloration behavior against the absorbed dose and the other detailed effects must be investigated separately for IAU and ADMI data as discussed earlier.

Cons. (mg/L)	Dose (kGy)	RY			SB			SR			WB			MIX		
		pH Red.	Abs. Red.	ADMI Red.	pH Red.	Abs. Red.	ADMI Red.	pH Red.	Abs. Red.	ADMI Red.	pH Red.	Abs. Red.	ADMI Red.	pH Red.	Abs. Red.	ADMI Red.
50	0.91	11.5	97	97.8	22.1	86.3	92.5	26.1	88.6	96.4	17.7	83.5	82.5			
50	2.6	19.1	98.7	99.1	30.3	96.4	96.8	31.5	96.7	98.1	26	95.8	93.7			
50	5.8	16.9	98.3	99.1	31.8	98.8	97.6	30.3	96.6	98.8	29	97.7	96.7			
100	0.91	24	86.3	82.1	21.7	64	79.8	25	68.2	91	15.8			20.6	70.4	67.5
100	5.8	30.3	97.9	98.4	28.8	94.7	93.3	36.3	93.5	96.3	27	92.2	87	27.9	94.9	89.2
200	0.91	22.1	36.2	45.2	18.1			23.2	43.5	72.3	9.6	28.5	38.6	13.5	42.3	43.8
200	5.8	24.5	96.1	99.2	30.1	86.3	66.2	33.8	86.9	94.6	28.4	80.6	73.5	24.8	88.22	79.1

Table 1: The results of percentage reduction for pH, absorbency and ADMI.





## Conclusion

For investigation on EB irradiation on textile wastewater, one can use ADMI or UV absorbance results. Measuring ADMI needs pH adjustment for samples with low value ADMI and does not require this step for high ADMI values. For reporting decoloration results of reactive dyes as a function of EB irradiation absorbed dose, ADMI with pH adjustment, ADMI without pH adjustment and IAU data can be used with similar precision. However for studying the detailed effects of prevailing factors, the IAU cannot be used instead of ADMI. In addition, at low values of ADMI, the pH adjustment is important.

## References

- Paul J, Rawat KP, Sarma KS, Sabharwal S (2011) Decoloration and degradation of Reactive Red-120 dye by electron beam irradiation in aqueous solution. *Appl Radiat Isot* 69: 982-987.
- Abdou L, Hakeim OA, Mahmoud MS, El-Naggar AM (2011) Comparative study between the efficiency of electron beam and gamma irradiation for treatment of dye solutions. *Chem Enging J* 168: 752-758.
- Abdullah FH, Rauf M, Ashraf SS (2007) Photolytic oxidation of Safranin-O with H<sub>2</sub>O<sub>2</sub>. *Dye Pigm* 72: 349-352.
- Lima EC, Royer B, Vagheti JC, Simon NM, da Cunha BM, et al. (2008) Application of Brazilian pine-fruit shell as a biosorbent to removal of reactive red 194 textile dye from aqueous solution: Kinetics and equilibrium study. *J Hazard Mater* 155: 536-550.
- Royer B, Cardoso NF, Lima EC, Vagheti JC, Simon NM, et al. (2009) Applications of Brazilian pine-fruit shell in natural and carbonized forms as adsorbents to removal of methylene blue from aqueous solutions-Kinetic and equilibrium study. *J Hazard Mater* 164: 1213-1222.
- Mahvi AH, Ghanbarian M, Nasser S, Khairi A (2009) Mineralization and discoloration of textile wastewater by TiO<sub>2</sub> nanoparticles. *Desalination* 239: 309-316.
- Bharadwaj A, Saroha AK (2014) Decolorization of the Textile Wastewater Containing Reactive Blue 19 Dye by Fenton and Photo-Fenton Oxidation. *J Hazard Toxic Radioact Waste* 04014043.
- Goslan EH, Gurses F, Banks J, Parsons SA (2006) An investigation into reservoir NOM reduction by UV photolysis and advanced oxidation processes. *Chemosphere* 65: 1113-1119.
- Weng C-H, Lin Y-T, Yuan H-M (2013) Rapid decoloration of Reactive Black 5 by an advanced Fenton process in conjunction with ultrasound. *Separat Purif Technol* 117: 75-82.
- Matilainen A, Sillanpää M (2010) Removal of natural organic matter from drinking water by advanced oxidation processes. *Chemosphere* 80: 351-365.
- Duarte CL, Geraldo LL, de Aquino PO Jr, Borrelly SI, Sato IM, et al. (2004) Treatment of effluents from petroleum production by electron beam irradiation. *Radiat Phy Chem* 71: 443-447.
- Kim SM, Han B, Kim JK, Kim YK, Choi JS, et al. (2006) Application of high power electron accelerator in wastewater treatment. *Proceedings of RuPAC, Novosibirsk, Russia* 23-125.
- Emami-Meibodi M, Parsaeian M-R, Banaei M (2013) Ozonation and Electron Beam Irradiation of Dyes Mixture. *Ozone: Sci Eng* 35: 49-54.
- Emami-Meibodi M, Parsaeian MR, Amraei R, Banaei M, Anvari F, et al. (2016) An experimental investigation of wastewater treatment using electron beam irradiation. *Radiat Phy Chem* 125: 82-87.
- Eaton AD (1998) Standard methods for the examination of water and wastewater. Washington DC: American Public Health Association.
- Feiyue Q (2011) Research on the chroma measurement of industrial wastewater. *J Indu Water Treat* 9: 025.
- Yuan-cai CH-IC, Shi-yu ZH-yF (2009) Derivative Spectra Method for Rapid Determination of Pulping Effluent Chroma. *J China Pulp Paper* 12: 004.
- Yao G, Wang J-W (2008) Determination of Colority of Sewage Water. *Phyl Test Chem Analys* 1: 027.
- Ting TM, Jamaludin N (2008) Decolorization and decomposition of organic pollutants for reactive and disperse dyes using electron beam technology: effect of the concentrations of pollutants and irradiation dose. *Chemosphere* 73: 76-80.
- Vahdat A, Bahrami SH, Arami M, Motahari A (2010) Decomposition and decoloration of a direct dye by electron beam radiation. *Radiat Phy Chem* 79: 33-35.
- Wojnárovits L, Takács E (2008) Irradiation treatment of azo dye containing wastewater: An overview. *Radiat Phy Chem* 77: 225-244.
- Wu J, Eiteman MA, Law SE (1998) Evaluation of membrane filtration and ozonation processes for treatment of reactive-dye wastewater. *J Environ Eng* 124: 272-277.
- Kao CM, Chou MS, Fang WL, Liu BW, Huang BR (2001) Regulating colored textile wastewater by 3/31 wavelength ADMI methods in Taiwan. *Chemosphere* 44: 1055-1063.
- Montgomery DC (2000) Design and Analysis of Experiments. Wiley.
- Wang M, Ruiyuan Y, Wenfeng W, Zhongqun S, Shaowei B, et al. (2006) Radiation-induced decomposition and decoloration of reactive dyes in the presence of H<sub>2</sub>O<sub>2</sub>. *Radiat Phy Chem* 75: 286-291.