

Supplementary Materials

Table S1: Primers used for qRT-PCR.

Primer Name	Sequence 5'→3' Sequence	Tm (°C)	Fragment length (bp)
GAPDH-F	CGACCACTTTGTCAAGCTCA	59	112
GAPDH-R	GGTGGTCCAGGGGTCTTACT	60	
HOTAIR-F	CGCCTGTGCTCTGGAGCTTG	58	138
HOTAIR-R	CTAAGTCCCGGGTGGGAGCCG	61	
HDAC1-F	ACGAATTGCCTGTGAGGAAGA	60	234
HDAC1-R	CCAGAGCTGGAGAGGTCCAT	61	
HDAC2-F	GGAGGTCTGAAGAAATGTGGC	59	190
HDAC2-R	ACTGTCAAATTCAGGGGTTGC	59	

Table S2: Patient characteristics.

Patient ID	Age at surgery	Sex	Localization	Pathology	Laurén classification	TNM 7 Stage	T	N	M	Perineural invasion	Intra vascular growth	Hotair FC T/N	Survival (days)	Dead=1 Alive = 0
1	63	M	Gastroesophageal junction	Adenocarcinoma	Diffuse	IIIB	T4b	N0	M0	Yes	No	93	1045	1
2	54	F	Gastroesophageal junction	Adenocarcinoma	Mixed Intestinal-Mucinous	IB	T2	N0	M0	No	No	36	625	1
3	78	M	Gastroesophageal junction	Adenocarcinoma	Mixed Intestinal-Mucinous	IIIB	T4b	N0	M0	Yes	No	690	256	1
4	59	M	Gastroesophageal junction	Adenocarcinoma	Mixed Intestinal-Mucinous	IIIA	T2	N3	M0	Yes	Yes	1	244	1
5	60	F	Gastric antrum	Adenocarcinoma	Diffuse	IV	T4a	N2	M1	Yes	No	120	394	1
6	55	F	Gastroesophageal junction	Adenocarcinoma	Intestinal	IIIB	T4b	N0	M0	Yes	No	1	1046	0
7	64	M	Gastric antrum	Adenocarcinoma	Diffuse/Signet ring cell	IA	T1	N0	M0	No	No	48	984	0
8	78	M	Gastroesophageal junction	Adenocarcinoma	Intestinal	IIIB	T4b	N0	M0	No	No	608	23	1
9	74	M	Gastroesophageal junction	Adenocarcinoma	Intestinal	IIIA	T2	N3	M0	Yes	No	213	233	1
10	53	M	Gastroesophageal junction	Adenocarcinoma	Intestinal	IIIA	T4a	N1	M0	Yes	No	120	573	1
11	61	M	Gastric corpus	Adenocarcinoma	Diffuse	IIIB	T3	N3	M0	Yes	No	254	764	1
12	62	M	Gastroesophageal junction	Adenocarcinoma	Intestinal	IIB	T3	N1	M0	No	No	1	939	0
13	80	M	Gastric fundus	Adenocarcinoma	Diffuse	IIIB	T4b	N0	M0	Yes	No	1.3	216	1
14	64	M	Gastric antrum	Adenocarcinoma	Diffuse	IIIB	T4b	N0	M0	Yes	No	1	600	1
15	59	M	Gastroesophageal junction	Adenocarcinoma	Intestinal	IIB	T2	N2	M0	No	No	27	561	1
16	81	F	Gastric antrum	Adenocarcinoma	Intestinal	IA	T1	N0	M0	No	No	10	925	0
17	90	F	Gastric antrum	Adenocarcinoma	Intestinal	IIIA	T4a	N1	M0	Yes	No	53	508	1
18	51	F	Gastric antrum	Adenocarcinoma	Diffuse	IIIA	T3	N2	M0	Yes	No	52	918	0
19	84	M	Gastric antrum	Adenocarcinoma	Intestinal	IB	T2	N0	M0	No	No	62	899	0
20	69	M	Gastroesophageal junction	Adenocarcinoma	Intestinal	IIIA	T3	N2	M0	Yes	No	499	510	1
21	58	M	Gastroesophageal junction	Adenocarcinoma	Intestinal	IV	T4	N2	M1	Yes	No	225	890	0
22	57	F	Gastric fundus	Adenocarcinoma	Diffuse	IV	T3	N3	M1	Yes	No	21	882	0
23	66	M	Gastric antrum	Adenocarcinoma	Intestinal	IIIB	T4b	N0	M0	Yes	No	14	398	1

24	55	M	Gastroesophageal junction	Adenocarcinoma	Intestinal	IIIB	T4b	N0	M0	Yes	No	9	773	0
25	53	M	Gastroesophageal junction	Adenocarcinoma	Intestinal	IIB	T2	N2	M0	No	No	8	772	0
26	75	F	Gastroesophageal junction	Adenocarcinoma	Intestinal	IB	T2	N0	M0	No	No	49	765	0
27	71	M	Gastric corpus	Adenocarcinoma	Diffuse	IIIB	T4b	N0	M0	No	No	443	491	1
28	73	M	Gastroesophageal junction	Adenocarcinoma	Intestinal	IIIA	T3	N2	M0	No	No	34	709	0
29	66	M	Gastroesophageal junction	Adenocarcinoma	Intestinal	IIIA	T3	N3	M0	Yes	Yes	5	98	1
30	36	M	Gastric antrum	Adenocarcinoma	Diffuse	IB	T2	N0	M0	Yes	No	1	687	0
31	49	M	Gastric antrum	Adenocarcinoma	Diffuse	IIIB	T3	N3	M0	Yes	No	1	667	0
32	76	M	Gastric antrum	Adenocarcinoma	Intestinal	IIIB	T4b	N3	M0	Yes	Yes	334	666	0
33	59	M	Gastric fundus	Adenocarcinoma	Diffuse	IIIA	T4a	N1	M0	Yes	Yes	32	631	0

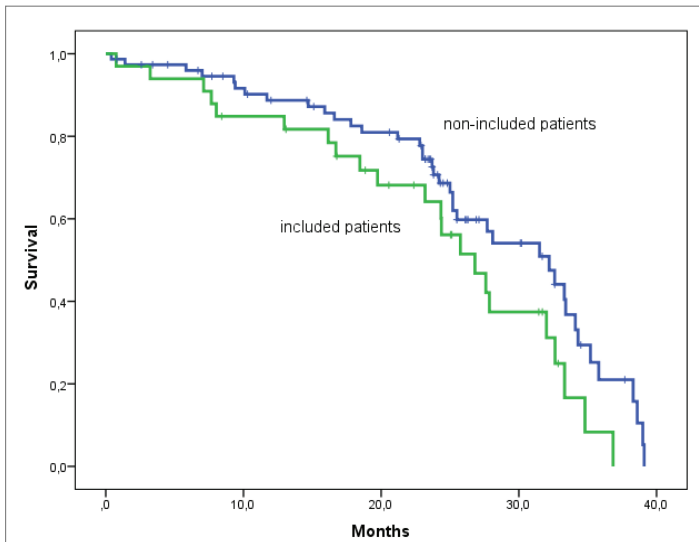


Figure S1: Survival curves: Survival curves for non-included cohort of operated patients in the time period July 2008–November 2009 (blue) and patients included (green). Median survival 32.2 months (26.4-31.3) vs. 26.9 (22.4-31.3) HR=1.65 (0.9-2.8) p=0.078.

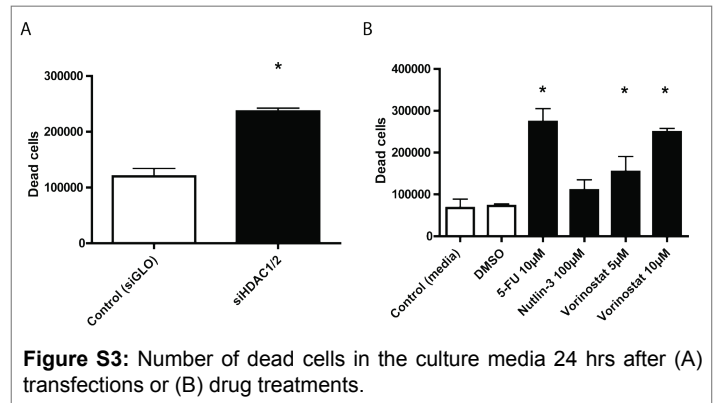


Figure S3: Number of dead cells in the culture media 24 hrs after (A) transfections or (B) drug treatments.

HOTAIR expression in HFE145 and SNU638 cells

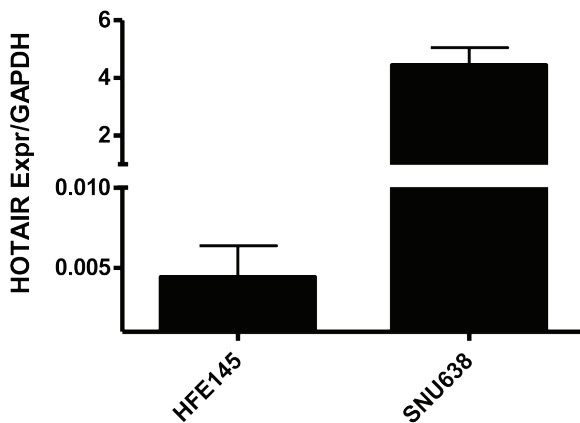


Figure S2: HOTAIR expression in HFE145 and SNU638 cells.